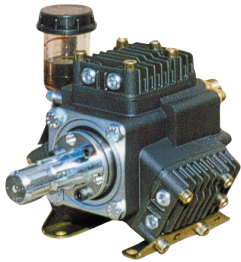
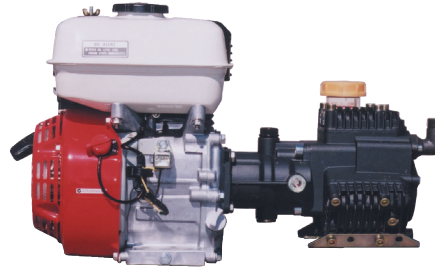


# Bertolini Pumps PA330 Specification Sheet



## APL0340S

PA330 Pump with 1 3/8" Spline



## APL0340KGH

PA330 Pump with GX200 Honda Motor

## 3 Piston Semi-Hydraulic Diaphragm Pumps

<b>MAX FLOW</b>	<b>34</b> l/m	<b>9</b> USGPM
<b>MAX PRESSURE</b>	<b>40</b> bar	<b>580</b> PSI

Specifications				
	R.P.M	R.P.M	650	650
Power	KW	HP	2.5	3.4
Weight	Kg	Lbs	7.3	16
Suction Lift - MAX	mt	ft	1.5	4.9
∅ Intake	mm	in	24	1"
∅ High Pressure	mm	in	G 1/2	G 1/2
MAX Temperature	°C	°F	40	104
Oil Type	SAE	W	SAE 30	30W
Oil Capacity	Lt	U.S.G	0.6	0.16

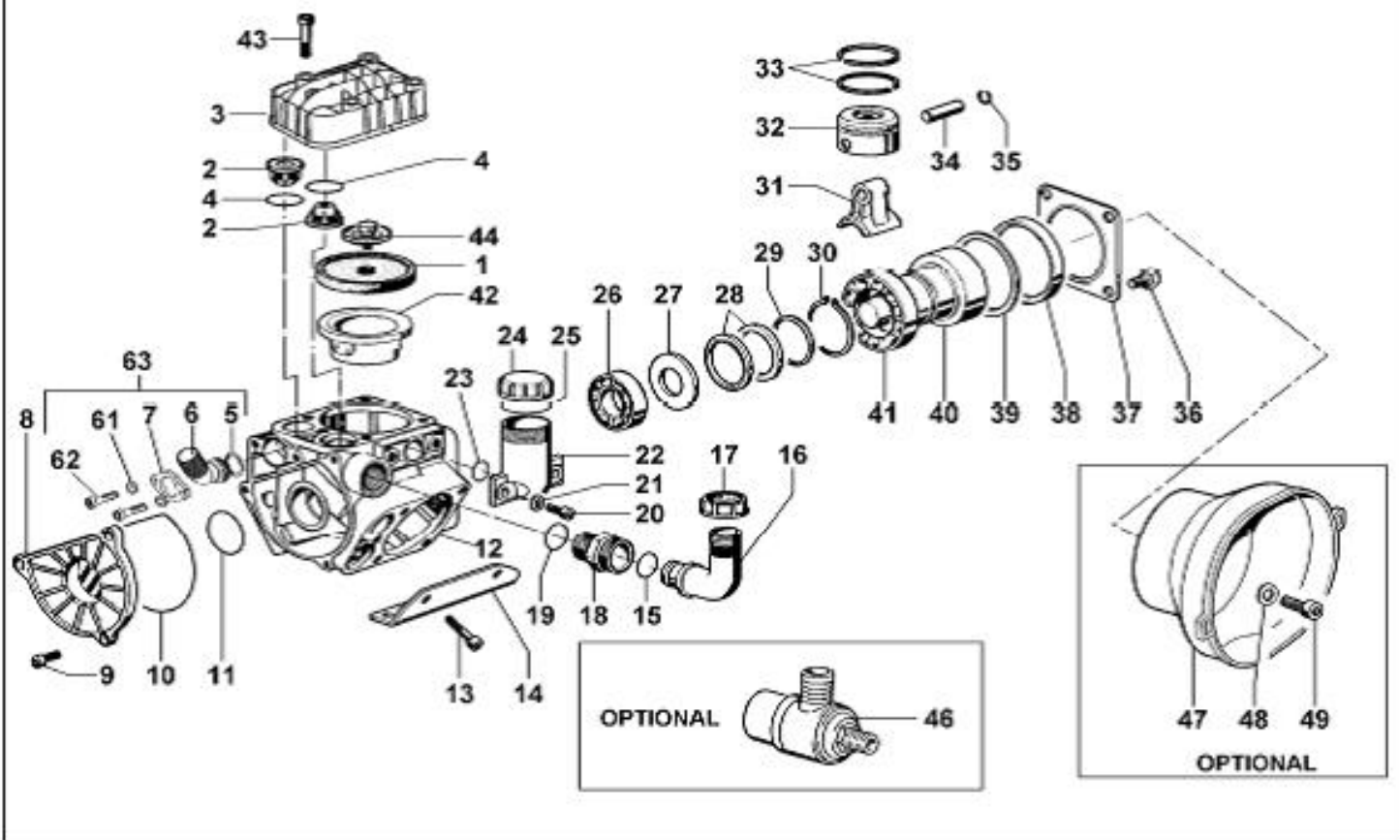
Flow Chart									
R.P.M		400		450		500		550	
BAR	P.S.I.	l/min	KW	l/min	KW	l/min	KW	l/min	KW
2	29	26.5	0.1	29	0.11	31.5	0.12	34	0.14
20	290	25	1	27.5	1.1	30	1.2	32	1.3
30	435	24.5	1.5	27	1.6	29.5	1.8	31.5	1.9
40	580	24	2	26.5	2.2	29	2.4	31	2.5

## Features

- Triple Diaphragm pumps engineered for smoother and quieter operation
- Stainless steel check valves, all other wet end components anodized for durability
- PTO and engine drive models
- Also available as a pump and gearbox configuration only – Part number APL0340KG

# Bertolini Pumps PA330 Specification Sheet

## PA 330.1



# Bertolini Pumps PA330

## Specification Sheet



POS.	CODICE PART NO. REF.	DENOMINAZIONE - DESCRIPTION - DESCRIPTION	Q.TY	POS.	CODICE PART NO. REF.	DENOMINAZIONE - DESCRIPTION - DESCRIPTION	Q.TY
1	03.0040.31.2	PISTON DIAPHRAGM	3	26	81.2646.00.2	BEARING DIA.20x52x15	1
1	03.0040.00.2	DESMOPAN PISTON DIAPHRAGM	3	27	03.0011.61.2	SPACER	1
1	03.0040.36.2	HPS PISTON DIAPHRAGM	3	28	94.0047.76.2	CONROD RING	2
2	03.9821.97.3	VALVE ASSY	6	29	03.0012.61.2	SPACER	1
3	03.0202.09.2	HEAD	3	30	80.1331.00.2	SHAFT RING D.45	1
4	03.0029.36.2	VALVE SEAL	6	31	03.0005.09.2	CONROD	3
5	80.3218.00.2	O-RING 3,0x22	1	32	03.0006.09.2	PISTON DIA.48	3
6	31.1515.09.2	OUTLET FLANGE G. 1/2	1	33	81.8502.50.2	PISTON RING	6
7	31.1517.61.2	FLANGE	1	34	85.2006.00.2	PISTON PIN DIA.10	3
8	03.0003.09.2	SUCTION COVER	1	35	80.0003.00.2	RING DIA. 10	6
9	86.2131.00.2	SCREW M6x18 UNI5931	3	36	86.3185.00.2	SCREW M10x16 UNI5739	4
10	80.3210.66.2	O-RING 2,62x101,27	1	37	17.0013.61.2	COVER	1
11	80.3208.30.2	O-RING 2,62x36,14	1	38	80.2264.10.2	OIL SEAL DIA.68x90x10	1
12	03.0001.09.2	CRANKCASE	1	39	03.0015.61.2	SPACER	1
13	86.2900.00.2	SCREW M8x55 UNI5931	4	40	03.0017.26.2	CRANKSHAFT	1
14	03.0014.61.2	MOUNTING RAIL	2	41	81.2933.00.2	BEARING DIA.45x75x16	1
15	80.3200.00.2	O-RING 2,62x22,22	1	42	03.0007.01.2	PISTON SLEEVE	3
16	84.0542.00.2	90° ELBOW CONNECTOR DIA.25-1"	1	43	86.2893.00.2	SCREW M8x50 UNI5931	1
17	82.0049.00.2	WING NUT M34	1	44	03.0021.97.3	KIT DIAPHRAGM WASHER/SCREW AISI 316	3
18	83.5062.10.2	NIPPLES G.3/4-M34	1	46	24.3040.97.3	SAFETY VALVE 40bar (OPTIONAL)	1
19	80.3205.00.2	O-RING 2,62x25,07	1	47	31.1482.32.2	PLAIN SAFETY CONE (OPTIONAL)	1
20	86.2730.00.2	SCREW M8x30 UNI5931	2	48	84.3810.00.2	WASHER DIA.10,5x21x2	4
21	84.3685.00.2	WASHER DIA.8,4x15x1,5	2	49	86.3212.00.2	SCREW M10x20 UNI5931	4
22	23.0008.32.2	OIL FILLER	1	61	84.3585.00.2	WASHER D.6 UNI6592	2
23	80.3180.00.2	O-RING 2,62x15,08	1	62	86.2108.00.2	SCREW M6x16 UNI5931	2
24	85.2750.00.2	OIL FILLER CAP	1	63	31.8916.97.3	KIT G.1/2"	1
25	82.4120.00.2	GASKET DIA.45x19x1,5	1				